

# The Most Complete Line of Air Filtration Products

Commercial | Industrial | Hospital | Gas Turbine | Paint Filtration Applications | Air Cleaning Equipment



**Healthy Environments**  
Through Pure Performance



## About Our Company

Koch Filter® is a world-class manufacturer of air filtration products. Founded in 1966 by Joseph Koch, Koch Filter is recognized globally for its premier brand of high efficiency air filtration products and the industry's broadest range of air filters for any application.

### LOUISVILLE, KY HEADQUARTERS

Koch Filter is headquartered in Louisville, KY where corporate offices, modern manufacturing plant and extensive warehousing facilities are combined.



### HOUSTON, TX MANUFACTURING PLANT

Our Houston facility serves our customers throughout the southwestern United States and Mexico.



### MIRA LOMA, CA MANUFACTURING PLANT

Our manufacturing facility in southern California (25 miles east of Los Angeles) provides prompt service to our customers in the western United States.



### EAST GREENVILLE, PA MANUFACTURING PLANT

Our East Greenville facility (located between Philadelphia and Allentown) serves our customers in the northeastern United States and Canada.

## Distribution Network

Koch Filter supplies high quality air filtration products to customers throughout North America and around the world. To ensure the prompt availability of the complete Koch Filter product line, we have developed a large network of trained field representatives and distributors. Supported by our multiple manufacturing sites, our experienced sales team is always ready to offer solutions to any air filtration problem, regardless of the customer's location.

## Lead Times

In today's business environment, speed matters. The Koch team is committed to meet our customers needs and expectations each and every time.



## Helping Our Customers Save Money

### Delivering Clean Air for Healthy People and Places

#### Optimize the Performance of Buildings

By delivering high quality, durable air filtration products each and every time.

#### Delivering Clean Air to Power Wellness

Improving indoor air quality that protects people, processes and equipment.

#### Keeping People Healthy and Safe

Air filtration products that mitigate airborne pathogen spread and reduces exposure to VOCs and air pollution.

#### Ensuring Comfort and Wellness

To drive high performance, confidence and peace of mind for employees and customers.

#### Reduce Energy Use

Site surveys by our regional area managers to help our customers improve energy efficiency and reduce energy consumption costs.



### Training, Technical Services, Filtration Solutions and More....

Koch Filter offers a full menu of value-added services. Filtration training seminars, site surveys, filter life-cycle comparisons and a variety of other field services are offered to enhance our value to our distributors and customers around the world.

## Applications

- Airports
- Automotive
- Cannabis
- Clean Rooms
- Commercial
- Data Centers
- Dust Collection
- Education
- Firing Ranges
- Food Production
- Gas Phase
- Gas Turbine
- Hospital
- Hospitality
- Industrial
- Industrial Cartridge Filters
- Industrial Coating
- Microelectronics
- Mining
- Museums
- Pharmaceutical
- Sports Arenas
- Swine





## Multi-Pleat Extended Surface Pleated Panel Filters



**Multi-Pleat™ XL8, XL10 & XL11**  
MERV 8, 10 and 11

- Standard and high capacity
- High performance synthetic media
- Durable beverage board frame
- Available in a wide range of standard and custom sizes



**Multi-Pleat™ Green 13**  
MERV 13

- High capacity
- High performance synthetic media
- Low resistance to airflow compared to competitive models
- Available in a wide range of standard and custom sizes



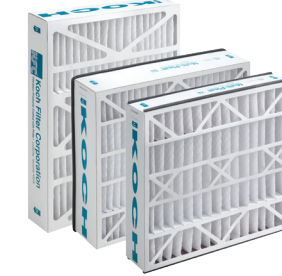
**Multi-Pleat™ BOSS**  
MERV 8, 10, 11 and 13

- High capacity
- Heavy gauge metal backing
- High dust holding capacity
- Low operating resistance to airflow



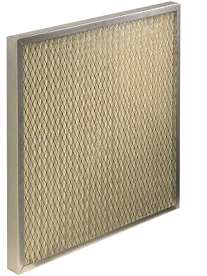
**Multi-Pleat™ Elite**  
MERV 8

- Self supported pleated filter
- Standard and high capacity
- Available in 1" and 2" standard sizes
- Moisture resistant frame



**Multi-Pleat™ Series AB, HW & SG**  
MERV 8, 10, 11 and 13

- High performance replacement filters for commercial and residential air cleaners such as Airbear®, Honeywell®, SpaceGard® and other brands.
- High performance synthetic media



**Multi-Pleat™ HT**  
MERV 8

- High temperature applications
- 24 gauge aluminized steel frame
- Heavy-duty fiberglass media
- Low pressure drop

## High Efficiency Filters



**Multi-Cell, CS & HT**  
MERV 11, 13 and 14

- Medium and high efficiency
- Rigid construction
- High temperature options available
- Multiple frame and header options



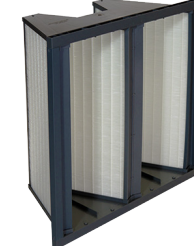
**Multi-Flo Series S&G**  
MERV 10-15

- Medium and high efficiency
- High efficiency synthetic media (S)
- Fiberglass media (G)
- Low pressure drop / Reduce energy cost



**Multi-Sak Synthetic, Glass and Oil Mist**  
MERV 11-14

- Low pressure drop / extended service life
- Progressively dense media
- Long record of proven reliability



**DuraMAX 2v & 2vS**  
MERV 11-15

- High efficiency minipleat filter
- Microfiberglass or synthetic media
- Low pressure drop
- Reduces energy cost



**DuraMAX 4v & 4vS**  
MERV 11-16

- High efficiency minipleat filter
- Microfiberglass or synthetic media
- Low pressure drop
- Reduces energy cost



**MicroMAX, EDGE & PL6**  
MERV 11-15

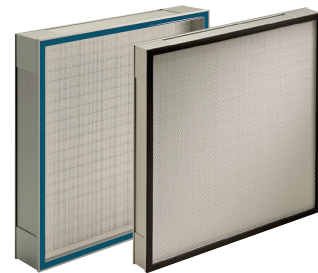
- Minipleat design
- High efficiency microfiberglass or synthetic
- Low pressure drop
- Reduces energy cost

## BioMAX HEPA Filters



**BioMAX HEPA**  
95%, 99.97%, 99.99% and 99.999% efficiency

- Multiple cell side options
- Standard and high capacity models
- Long service life
- Factory tested for efficiency



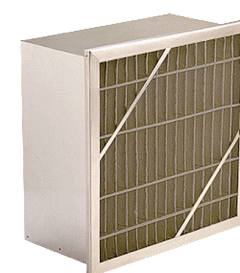
**BioMAX CS**  
99.99% efficiency

- Compact & lightweight
- Gasket or gel seal
- Low resistance to airflow
- Reduced energy costs



**BioMAX V2000 & V2400**  
99.99% efficiency

- Minipleat design for low pressure drop
- Leak free sealant
- High dust holding capacity
- Aluminum or stainless steel frame



**DuraKleen**  
High efficiency gas phase filter

- Removes VOC's chemicals and contaminants
- Small mesh size carbon for high efficiency
- Low pressure drop
- Excellent polishing filter for high contaminants



**DuraPure**  
High efficiency gas phase filter

- Removes odors and VOC's
- Premium grade coconut shell carbon construction
- Multiple carbon options
- Excellent polishing filter for high contaminants



**OdorKleen ES, 250, 600 and 200/M13**

- Superior gas & odor adsorption
- Low pressure drop
- Great particulate efficiency
- Multiple efficiencies and carbon weights



## Paint Spray Booth



### SprayStop Paint Arrestors HCX, S and SHC

- Removal efficiency above 99%
- Available in pads, blankets and rolls
- Excellent paint holding capacity
- Exceptional value for high volume operations



### SprayStop Overspray Cube Filters

- Pocket and cube styles extend filter life and efficiency
- Superior paint holding capacity
- High efficiency helps reduce emissions



### SprayStop NESHAP Multi Stage System Overspray Collection Filters

- Designed for maximum final filter life, airflow and efficiency
- Exceeds the NESHAP 40CFR 63 regulations
- Customizable to meet any coating operation
- Unaffected by moisture and humidity



### Diffusion Panels / KDF 600 Diffusion panels and media

- Blanket and pad configurations
- Prevents particle migration
- Progressively dense fiber matrix
- Exceptional performance



### Maxi-Grid Panels and Links

- 5 styles available: 200, 300, 400, 550 and 600
- Self sealing design
- Excellent for high moisture
- Slip on sleeves available



### Duo-Cap, Duo-Cube and Duo-Pak 40

- 5 styles available
- Extended filter lifecycles
- Excellent for high moisture
- Superior dust holding capacity

## Pads & Rolls



### HogsHair, Polyester and Fiberglass

- High dust holding capacity
- Wide range of pad and roll sizes
- Pre cut pads or bulk rolls



### Polyester and Fiberglass Auto Rolls

- Designed to meet/exceed specifications
- Rigid quality control inspection
- 4 unique roll filter media



### Fiberglass and Polyester Commercial and Industrial

- Durable construction
- Heavy duty frame and corners
- Special sizes available
- Easy to install

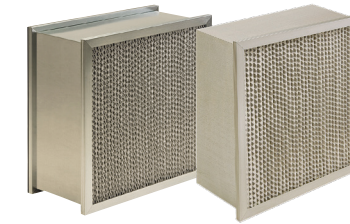
## ICF Cartridges



### Replacement Cartridge Filters for Gas Turbine and Dust Collection

- High performance media options
- Multiple sizes and media configurations
- Durable construction
- Multiple core and cap options
- High moisture resistance

## GT Filters



### Maxi-Cell High efficiency barrier filter

- MERV 11 and 14 efficiency ratings
- Durable metal frame
- Performs in systems up to 2500 cfm
- Faceguards upstream and downstream



### Multi-Sak GT High capacity synthetic Filter

- Stiff pocket filter
- Remove dust, smoke vapors/bacteria
- Low pressure drop
- Durable construction

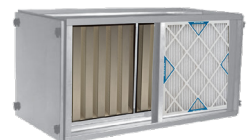
## Frames and Housings



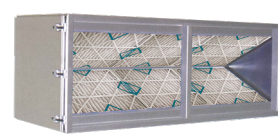
Side Access Housings

### Air Filter Housings

- Versatile line of Air Filter Housings designed for easy installation into original equipment and retrofit filtration systems.
- Standard housings are constructed of 16 gauge steel and can be manufactured to meet specifications in ASHRAE or HEPA applications.
- A wide variety of optional features and housing depths.



BioMAX HEPA-Lock Housing



V-Bank Housings



Carbon and Gas  
Phase Filter  
Housings



### Type A8 Filter Holding Frames, Clips and Fasteners

- Designed for simple and cost-effective construction of filter banks.
- 16 gauge galvanized steel components.
- Each frame is equipped with gaskets to provide protection against air bypass.
- Pre-punched holes in the sides of the frame make filter bank construction easy and trouble-free.
- Wide selection of clips and latches.

## IsoClean Portable HEPA Air Cleaners



### IsoClean 400, 800 & CM Portable HEPA air filtration for any environment

The IsoClean lineup is an industry leader in portable HEPA air filtration. Each model is well suited for specific environments that need HEPA filtration and a high number of air changes per hour. The IsoClean is ideal in educational, business and healthcare settings. The IsoClean CM can produce 1700 CFM of HEPA filtered air, which is one of the highest in the industry.

- Excellent filter life
- Easy to move
- Long record of proven reliability
- Negative pressure capable
- Optional UV-C disinfection light
- Durable steel components
- MERV 8 prefilter (optional carbon)
- Quick shipping



# Contact Our Team Today

**info@kochfilter.com | kochfilter.com | 800-757-5624**

We are passionate about clean air. Koch offers the most reliable and competitive filters and air cleaning equipment in the industry with the speed and engagement that builds loyal relationships that keep our customers coming back.



800-757-5624 (toll free) | 502-634-4796 (local) | 502-969-2364 (fax)

8401 Air Commerce Dr. Louisville, KY 40219

